

Repaso Examen #8: Polinomios, suma y resta

I. Completa la tabla

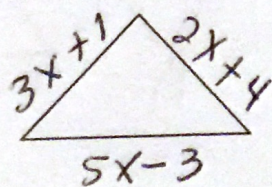
Polinomio	Grado	Clasificación	Coefficientes	Constantes
$5x$				
$2x^2 - 15$				
$x^2 - 2x + 8$				
0				
$2x^4 - 4x^2 + x - 6$				
$5 - x^2$				
-11				

II. Simplifica

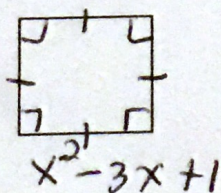
- $(14x^2 - 7x) + (3x^2 + 6x + 7)$
- $(4x^3 - 7x^2 - 5) + (x^3 - 5x^2 - 10)$
- $(x^3 - 5) - (7x^2 - x - 3)$
- $(5n^2 - 4) - (n^2 + 2n - 11)$
- $(3 - 3x^3 - 5x^2) + (x + x^3 - 5)$
- $(8 - 2x^2 - x + 8x^3) - (3x - 5x^3 - x^2 + 1)$
- $(-3x^2 - 2x + 1) + (2x^5 - 7x^3 - x^2 + 1)$

III. Determina el perímetro

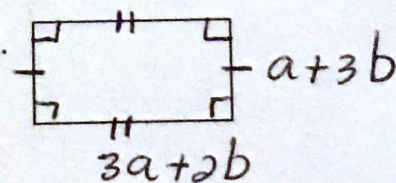
1.



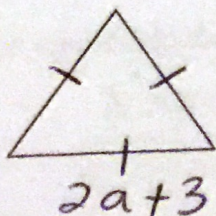
2.



3.



4.



5.

